

# Privatzimmer Bäumlegasse Dornbirn

## Bright Rooms, shared Eat-In Kitchen with Terrace and Garden



### Pretty private – almost like home!

Bright private non-smoking rooms in a shared house.

All rooms offer access to a spacious eat-in kitchen/dining room with terrace, wonderful views to the surrounding mountains and shared bathrooms/toiletttes. The house also offers a laundry room with a washing and drying machine, garage for bicycles, storage space for suitcases and a garden. All these facilities can be used and are shared between tenants.

The house is in a quiet but central location and only a few minutes walk away from bus stops, train station, river named Dornbirner Ache, beautiful natural recreation area, various outdoor and indoor sports facilities, University of Applied Science, Trade Fair Premise, shopping centre and hospital. The market square with restaurants and shops is 15 minutes walk away.

The rental fees depend on the duration of stay and the room size (approx. €590,- to €880,- per month). Heating and electricity, WLAN and LED HD Sat-TV is included in the costs. Bed linen, bath towels and cleaning service is offered.

I am looking forward to your enquiry and I am happy to answer any further questions. If interested, please send me an email with your desired duration of stay and date. E-Mail: [louis.tornare@gmail.com](mailto:louis.tornare@gmail.com)

### Room descriptions

#### First Floor

Spacious Room on 1st Floor - available from 2. March 2026

Size of mattress: 180cm x 200cm



Shared Kitchen on 1st Floor offering access to large terrace





View to surrounding mountains from the terrace and garden.



Shared bath and shower rooms with toilettes on 1st and 2nd Floor





## Second Floor

**Room with Balcony** on 2nd Floor - available from 22. December 2025



Size of mattress: 140cm x 200cm

**Room with Sleeping Platform** on 2nd Floor the couch is also a bed - available from 1. January 2026



Size of mattress: 140cm x 200cm

**Room on 2nd floor with Sleeping Platform** the couch is also a bed - available from 1. May 2026



Size of mattress: 120cm x 200cm

**Room on 2nd floor with nice view to the Swiss mountains and sunset**  
- available from 2. March 2026







Size of mattress: 140cm x 200cm

Room on 2nd floor with Sleeping Platform, the couch is also a bed - available from 1. April 2026



Size of mattress: 140cm x 200cm

## Apartment on the ground floor with two bedrooms

**Room East** offering access to the garden - not available at the moment, unless you rent the whole apartment



## Shared Kitchen and Living room



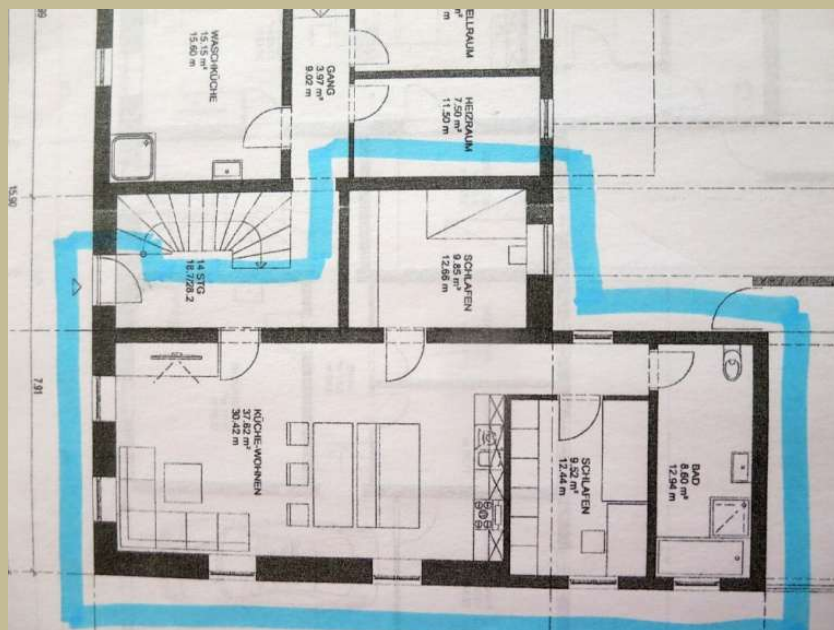
## **Room South** - available from now on





shared toilet and bathroom

The entire 3-room apartment on the ground floor - the Room South or the whole apartment available from now on





## Basic rooms on the ground floor

Room East - available from 1. May 2026



Room West - available from 1. February 2026



Laundry Room



Bike Storage

